

# GLAZED-IN VENTILATORS

## TC60

*compact flapvent with an excellent price/quality ratio*

### INTRODUCTION

The RENSON TC60 is a thermally broken aluminium glazed-in window flapventilator with soft-line design outer profile and with only a 60 mm glass reduction. The punched inside grille acts as an inside mesh.

### MATERIAL

Inside and outside profile: aluminium AlMgSi 0.5 (according to DIN 1748)

Finishing: satin anodised or powdercoated in any RAL or Syntha Pulvin® colour (dual colour possible)

Endcaps in ASA polymer type Luran S (colourfast, weather- and UV-resistant)

Endcaps are in black or white but also available in other colours upon request.

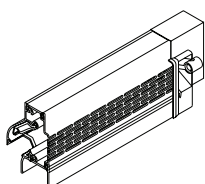
### DIMENSIONS

Glass reduction: 60 mm

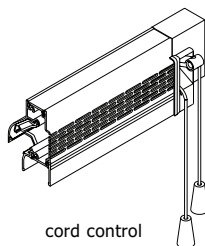
Height: 75 mm

Glass thickness: 20, 24 & 28 mm

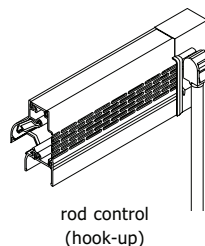
### CONTROLS



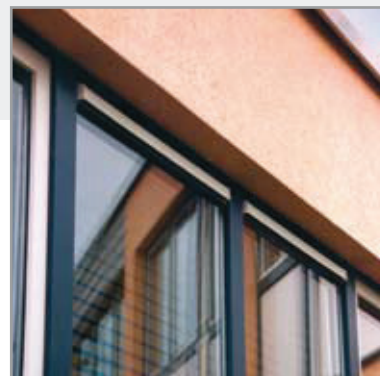
manual control



cord control



rod control  
(hook-up)



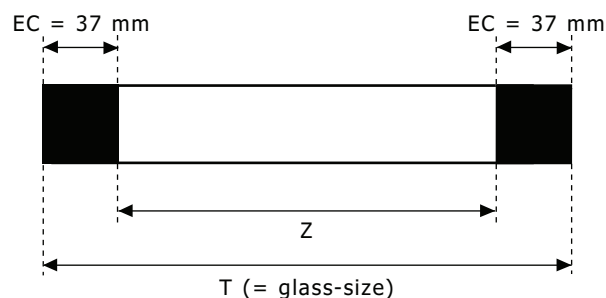
### ASSEMBLY

Developed for fabrication from bar lengths (6000 mm) or made to measure (maximum 2000 mm)

Cut ventilator to size from a bar length + fix endcaps (1 L + 1 R)

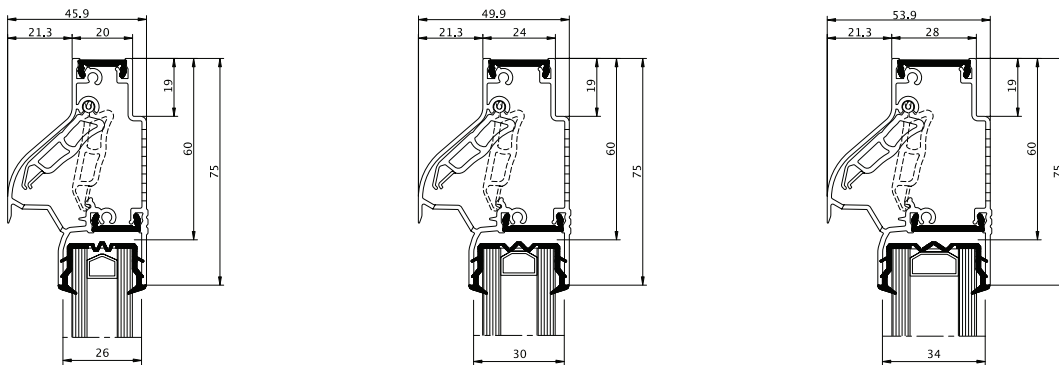
Overall dimension of the ventilator (T) = extrusion length (Z) + (2 x endcaps (EC))

We advise use of glazing gasket RENSON nr 039 or nr 034 (20-28 mm) for installation





## SECTION DETAILS



## TECHNICAL SPECIFICATIONS

	<b>TC60</b>
<b>AIRFLOW</b>	
2 Pa	62,6 m <sup>3</sup> /h/m
2 Pa	17,4 l/s/m
1 Pa	12,3 l/s/m
Equivalent area	15652 mm <sup>2</sup> /m
<b>COMFORT</b>	
Sound reduction D <sub>n,e,w</sub> (C;C <sub>tr</sub> )	(EN ISO 140-10, EN ISO 717-1)
- in open position	28 (0;0) dB
- in closed position	42 (0;0) dB
Self regulating	no
<b>TECHNICAL CHARACTERISTICS</b>	
U-value	3,3 W/m <sup>2</sup> K
Watertightness (closed position)	650 Pa
Windtightness	650 Pa